

# Guideline on the medication management of adults with swallowing difficulties

Supplement produced in association with  **Guidelines**

The development of this working party guideline has been supported by a grant from Rosemont Pharmaceuticals Ltd

This guideline has been developed by MGP Ltd, the publishers of *Guidelines*, and the Working Party was convened by them. Rosemont Pharmaceuticals Ltd was able to recommend experts for the working party group and comment on the scope and title, with final decisions resting with the Chair. Rosemont Pharmaceuticals Ltd had the opportunity to comment on the technical accuracy of this guideline but the content is independent of and not influenced by Rosemont Pharmaceuticals Ltd.

Rosemont Pharmaceuticals Ltd sponsored the development of this working party guideline.

Rosemont Pharmaceuticals Ltd has had the opportunity to comment on the medical content and accuracy of the guideline, however, final editorial control resides with the working party group.

The views and opinions of contributors expressed in this publication are not necessarily those of Rosemont Pharmaceuticals Ltd, or of *Guidelines*, its publisher, advisers, and advertisers.

No part of this publication may be reproduced in any form without the permission of the publisher.

CPR006

Date of preparation: September 2015

© 2015 MGP Ltd

# Guideline on the medication management of adults with swallowing difficulties

David Wright<sup>1</sup>, Nigel Chapman<sup>2</sup>, Mathias Foundling-Miah<sup>3</sup>, Ralph Greenwall<sup>4</sup>, Richard Griffith<sup>5</sup>, Anne Guyon<sup>6</sup>, Honor Merriman<sup>7</sup>

<sup>1</sup>Professor of Pharmacy Practice, University of East Anglia (UEA); <sup>2</sup>Retired Coroner for Nottinghamshire; <sup>3</sup>Consultant Pharmacist and Barrister at Law; <sup>4</sup>Pharmacist, Consultant; <sup>5</sup>Senior Lecturer in Health Law, Swansea University; <sup>6</sup>Lecturer in Speech and Language Therapy, UEA; <sup>7</sup>GP and CPD tutor, NHS Oxfordshire

## Introduction

A surprisingly high proportion of adults are unable to swallow tablets or capsules as highlighted in a survey of patients aged over 60 years carried out by community pharmacists; almost 60% of the 792 respondents experienced difficulty in swallowing medication in this form.<sup>1</sup> A similar proportion reported opening capsules or crushing tablets to make ingestion easier, unaware of the negative effect it may have on the activity of the drug.

Doctors are often unaware that their patient has an issue with the formulation of their medicine. It is important, therefore, for prescribers and other healthcare professionals to assess if the patient has swallowing difficulties, which may affect adherence.

Swallowing difficulty, or dysphagia, can occur in any age group although it is most common in older people since they are more prone to the causative diseases and age-related changes in salivary gland function.<sup>1</sup> Up to one-third of residents in nursing homes may experience difficulty swallowing, resulting in the common practice of crushing or opening of medicines.<sup>2,3</sup> NICE guidance on *Managing medicines in care homes* recommends the identification of swallowing problems as an integral element of the medication review process.<sup>4</sup>

Patients with swallowing difficulties present a management challenge since:

- › Therapeutic outcomes may be affected in those not adhering to prescribed medications
- › Tablets or capsules may cause choking with consequent risk to the airway
- › There may be an increased risk of a tablet or capsule becoming lodged in the patient's throat or oesophagus, resulting in incorrect drug dispersal and subsequent changes in efficacy and/or tolerability, and possible oesophageal damage
- › Altering the formulation of a medicine has important medical and legal implications (see Box 1, above and Box 2, p.4).

The aim of this guideline on the medication management of adults with swallowing difficulties is to promote best practice through:

- › Raising awareness among prescribers and healthcare professionals of the high prevalence of swallowing difficulties, particularly in older people
- › Promoting a multidisciplinary approach to the management of such patients
- › Signposting appropriate resources available to prescribers
- › Enabling prescribers to make clinically and legally appropriate decisions
- › Raising awareness of the risks associated with altering solid-dose oral formulations.

### Box 1: Definitions

Solid-dose oral formulation	Tablet or capsule (buccal or dispersible tablets are not considered solid)
Altering a solid-dose oral formulation	Crushing a tablet, opening a capsule, sucking or chewing a medication that is not designed to be sucked or chewed
Formulations that can be crushed/chewed	Tablets described as crushable, dispersible or chewable

## Identifying patients with swallowing difficulties

### Improved communication

- › Healthcare providers should always ask the patient or carer whether they have difficulty swallowing medication,<sup>5,6</sup> and assess the reasons for this
- › Doctors should ensure that known swallowing difficulties are taken into consideration when prescribing medication
- › Community pharmacists should assess the suitability of medication formulations for individual patients, and report swallowing difficulties to the prescriber
- › Carers should inform the patient's doctor if they know or suspect that swallowing medication is an issue

**Box 2: Legal implications of altering a solid-dose oral formulation**

- › To protect patients, the law requires that the:<sup>7</sup>
  - right medicine is given to the
  - right person, at the
  - right time, using the
  - right dose, in the
  - right form
- › Products should be prescribed in accordance with their marketing authorisation whenever possible
- › When products are used outside their licence (e.g. crushing non-crushable tablets) a greater liability rests with the individual prescriber, dispenser and/or person responsible for the provision or administration of the medication<sup>8</sup>
- › Liability can be minimised by:
  - clear documentation of the reason for altering the medicine
  - following evidence-based, safe, effective practice. In England, doctors must also meet the medication management and consent requirements of the Care Quality Commission's *Essential Standards for Quality and Safety*<sup>9</sup>
  - obtaining consent from the patient (in England and Wales, doctors may act in a patient's best interest if the patient is incapable of providing consent [in accordance with the Mental Capacity Act 2005]; in Scotland, doctors must act according to requirements of Part 5 of the Adults with Incapacity [Scotland] Act 2000)
- › Prescribing decisions that fall below the accepted standard can lead to:
  - civil liability
  - criminal liability
  - professional liability
  - breach of employment contract

**Clinical evaluation**

- › The causes of swallowing difficulties are numerous, manifesting as mechanical obstruction, or affecting the muscles or nerves involved in swallowing
- › Consider individual investigation and management in the following conditions:
  - neurological conditions (e.g. stroke, progressive neurological disease)
  - cancer (e.g. head, neck, oesophageal cancer)
  - cardiac and respiratory disease
  - physical/learning disabilities
- › Symptoms and signs indicating that an individual may experience difficulty swallowing medication include:<sup>5</sup>
  - difficult or painful chewing or swallowing
  - dry mouth (xerostomia) (see Box 3, below)
  - difficulty controlling food or liquid in the mouth
  - coughing/choking before, during or after swallowing
  - hoarse/wet voice quality
  - feeling of obstruction (e.g. globus sensation)
  - unexplained weight loss
  - regurgitation of undigested food
  - recurrent chest infections (resulting from aspiration)

N.B. For a full list of symptoms and signs of dysphagia, see the NICE guideline on nutrition support in adults.<sup>5</sup>

- › Specialist assessment (e.g. speech and language therapy, gastroenterology) is required for patients with any clinical condition that may require them to take liquid nutritional supplements or receive medicines by enteral feed tubes

- › Oral medication usage may also be complicated in patients with psychological conditions, such as:
  - learning disability
  - severe mental illness
  - dementia
- › In certain individuals, there may be a personal preference against taking certain medicines

**Management**

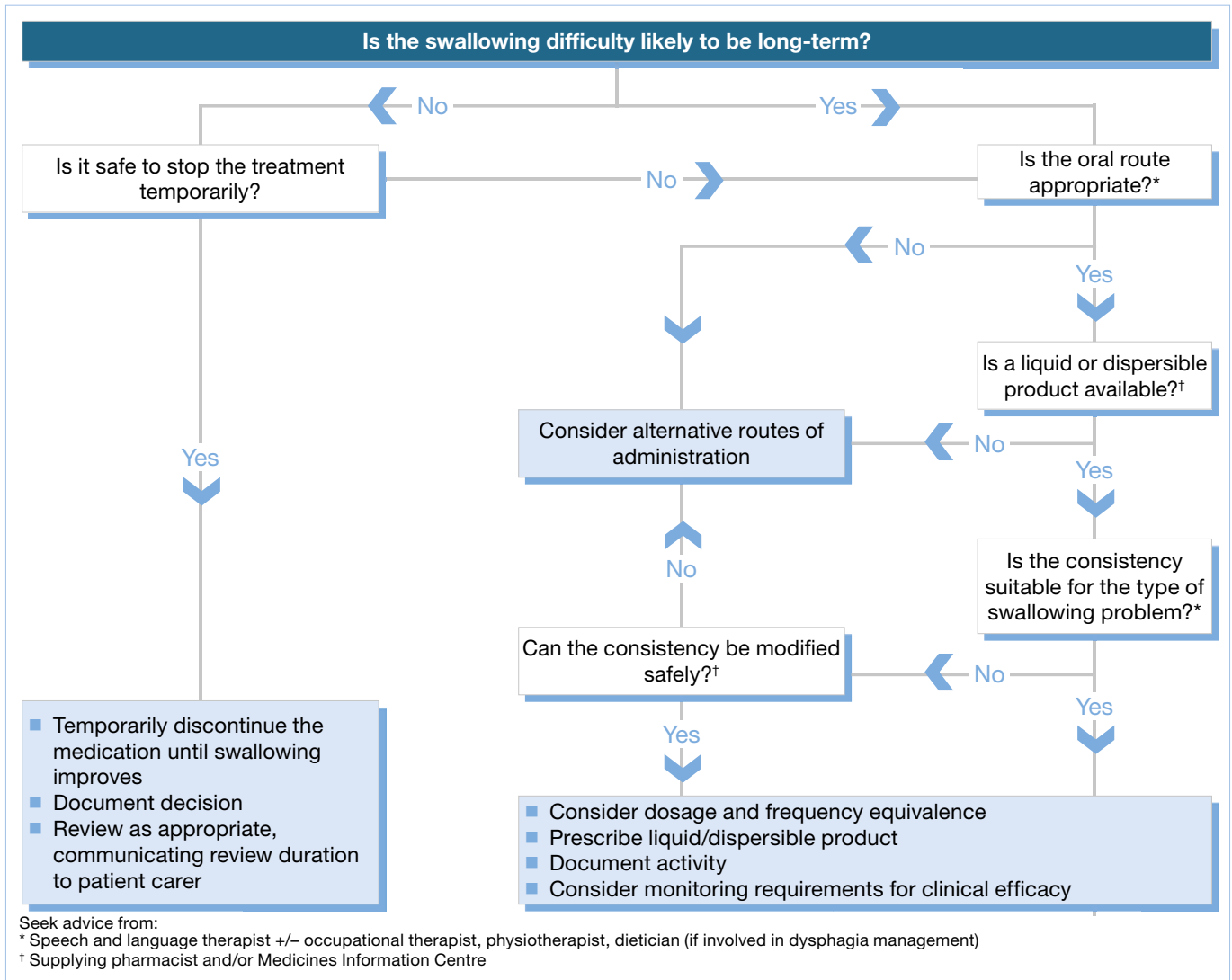
**Management of patients with evidence of swallowing difficulty**

The algorithm overleaf is designed to ensure that the patient receives the most appropriate formulation, which minimises the risk of adverse drug events, and therefore, support care homes to meet the NICE quality standard on *Managing medicines in care homes*<sup>10</sup>

**Box 3: Drugs that commonly cause dry mouth**

- › Tricyclic antidepressants (e.g. amitriptyline, dosulepin)
- › Other types of antidepressants (e.g. moclobemide, fluoxetine)
- › Antihistamines (e.g. chlorphenamine, promethazine)
- › Antimuscarinic drugs (e.g. hyoscine, ipratropium, tiotropium)
- › Certain antipsychotics (e.g. chlorpromazine, haloperidol)
- › Certain beta-blockers (e.g. carvedilol)
- › Certain diuretics (e.g. amiloride, triamterene)

Algorithm for the medication management of adults with swallowing difficulties



Alternative routes of administration

- > Check with pharmacist and/or Medicines Information Centre to ascertain whether alternative formulations of the medication in question are available, for example:
  - transdermal
  - parenteral/injectable
  - buccal
  - rectal
  - intranasal
  - sublingual
- > If a suitable formulation is not available:
  - for patients who are not able to take medicines orally:
    - consider prescribing an alternative medicine or discontinuing the treatment
  - for patients able to take medicines orally:
    - consider prescribing an alternative medication
    - if no alternative exists, altering a solid-dose oral formulation may need to be contemplated (see below)

Switching to liquid or dispersible oral formulations

- > Changing the formulation of a product may alter its bioavailability, efficacy and/or side-effect profile
  - do not assume that the dose of a liquid/dispersible formulation will be the same as the solid oral form of a particular product; check dose equivalence
  - when switching from a sustained-release to a standard-release form of a medicine, dose frequency will need to be adjusted accordingly
  - evaluate efficacy and side-effects frequently
- > Dispersible tablets may not give an even solution so part dosing is potentially inaccurate
- > Some medicines are available as non-licensed liquid 'specials' or extemporaneous preparations, which are formulated to meet the requirements of a doctor for specific use by an individual patient
  - dose uniformity or reproducibility may not have been tested for extemporaneous preparations, or some 'specials'

**Box 4: Drugs in solid-dose oral form that should never be altered (i.e. through crushing, chewing or opening) without authorisation<sup>11</sup>**

Drug type	Notes/abbreviations	Considerations	Examples
Modified release	Frequently identifiable by two letters such as m/r, LA, SA, CR, XL or SR at the end of the name. Words such as 'Retard', 'Slow' or 'Continus' in the title are sometimes used.	Should not be altered because: The medicine is designed to be released over prolonged period. The mechanism for slowing release may be damaged. Patient receives full dose quicker than expected and subsequently little or no dose at all for a period of time.	Verapamil (Securon SR) Propranolol (Inderal LA) Felodipine m/r (Plendil) Tramadol (Zydol SR) Morphine (MST Continus)
Enteric coated	Usually identifiable by the two letters EN or EC at the end of the name.	When coating is added to protect the stomach, co-administer a suitable gastro-protective product if the form is altered; but consider potential for drug interactions.	Aspirin (Nu-seals) Naproxen (Naprosyn EC)
		When coating is designed to deliver the drug beyond the stomach, crushing may result in the medicine not reaching its intended target.	Sulphasalazine (Salazopyrin EN)
Hormonal, cytotoxic, or steroidal		Drug may be dispersed in the air if crushed, and the administering nurse or carer may be exposed to the drug inadvertently; <sup>12</sup> consider risk of exposure if pregnant.	Tamoxifen (Nolvadex) Methotrexate (Maxtrex) Dexamethasone Oral contraceptives Hormone replacement therapy
Film and sugar coated	Usually identifiable by the two letters f/c or s/c at the end of the name.	Disruption of the coating may result in rapid degradation of the drug, poor tasting medicine and may also cause skin irritation in the patient or carer.	Quinine sulphate Ibuprofen

(Adapted from Wright. *Nursing Standard* 2002; 17: 43–45)

- to minimise the variability of supply, the product specification should be documented: the formulation, method of preparation, and strength should be noted
- › For a comprehensive list of products available in liquid or dispersible form, see [www.swallowingdifficulties.com](http://www.swallowingdifficulties.com)
- › Certain types of drug should never be altered without advice from a pharmacist and/or the manufacturers due to the changes these actions impose on the pharmacokinetics and pharmacodynamics of the drug (see Box 4, above)
- › The outcome of such pharmacological changes can be accentuated in older people due to age-related differences in pharmacokinetics

### Continuity of care

- › To ensure that continuity of care is in line with NICE guidance on medicines optimisation:<sup>13</sup>
  - any changes to a dosage formulation should be noted, and this information clearly communicated on to subsequent prescribers and other healthcare professionals
  - swapping between liquid formulations, particularly liquid 'specials' (which do not have bioavailability data), should be avoided
- › Prescribers should also consider:
  - how stable the product is once opened to the environment (see Box 5, p.7)
  - whether the safety of the person preparing or administering the product would be put at risk
    - alteration of a solid-dose oral formulation should be considered under Control of Substances Hazardous to Health (COSHH) regulations since there may be an increased exposure to chemical components
    - the person may have a hypersensitivity to the product or its constituents
  - whether the dose preparation could be accurately repeated
  - the amount and type of diluent and/or thickening agents that would be used
  - whether the results would be unpalatable

### Altering a solid-dose oral medication

- › Altering a solid-dose formulation should be reserved as last-resort and practised only after appropriate advice has been sought from a pharmacist and/or Medicines Information Centre

**Box 5: Examples of drugs that are unstable once open to the environment<sup>14</sup>**

› Amlodipine	› Atorvastatin
› Cabergoline	› Glycerol trinitrate
› Isosorbide mononitrate	› Isosorbide dinitrate
› Metronidazole	› Nifedipine
› Pergolide	› Topiramate

(Adapted from Church and Smith. *The Pharmaceutical Journal* 2006; **276**: 75–81)

- › Variation in the amount of drug reaching the system due to formulation change may impact efficacy and the potential for side-effects, particularly in drugs with a small therapeutic window including:
  - phenytoin
  - digoxin
  - carbamazepine
  - theophylline
  - sodium valproate

### Administering medications via PEG/PEJ/NG tube

- › Medication management of patients with percutaneous endoscopic gastrostomy (PEG), percutaneous endoscopic jejunostomy (PEJ) or nasogastric (NG) tubing requires careful consideration since most products are not licensed for administration via this route
- › The medication needs of patients should be reviewed if they are switched to enteral feeding, as certain medications may no longer be required
- › The British Association for Parenteral and Enteral Nutrition (BAPEN) provide a practical guide for administering drugs via enteral feeding tubes<sup>15</sup>
- › Prescribers should seek advice from a Medicines Information Centre before prescribing drugs to be administered via a feeding tube
- › Medical considerations:
  - ensure that there is a functional and accessible gastrointestinal tract
  - there is a risk of tube blockage, and drug–tube interactions
  - the medicines may interact with food
  - a drug–drug interaction may occur if more than one medicine is administered at a time
  - as the formulation is altered:
    - the activity of the product may be altered
    - variability may occur in the dose administered
- › Recommendations:
  - administration of medicines through a feeding tube should only be carried out by suitably trained staff, under an agreed written policy, and the practice should be documented. Always use a product that is licensed for administration via a feeding tube

- select a drug formulation that is appropriate for tube administration
- ensure that the feed and drug regimens are practical
- where possible a once daily preparation should be used to reduce the number of manipulations, but this must be by using long-acting drugs not sustained-release preparations<sup>16</sup>
- for drugs that need to be given on an empty stomach, the feed should be stopped for the appropriate duration before and after the medication is administered
- flush the tube before and after giving medications (with  $\geq 30$  ml water)
- if more than one drug is required, give drugs separately and flush between administrations (with  $\geq 10$  ml water)
- drug-enteral feed interactions should also be considered
- increase monitoring for clinical efficacy and adverse events

### Acknowledgements

We thank Ian Costello (Chief Pharmacist, Royal Marsden Hospital, London), Mark Greener (Freelance Medical Writer), John Hindle (Consultant Geriatrician, Llandudno Hospital, Llandudno) and Stephen Tomlin (Consultant Paediatric Pharmacist at Guy's & St Thomas' Hospital, London) for their help in reviewing the guideline.

### References

1. Strachan I and Greener M. Medication-related swallowing difficulties may be more common than we realise. *Pharmacy in Practice* 2005; **15** (10): 411–414.
2. Wright D. Medication administration in nursing homes. *Nursing Standard* 2002; **16** (42): 33–38.
3. Stevenson J. Meeting the challenge of dysphagia. *Nurse2Nurse* 2002; **3**: 2–3.
4. NICE. *Managing medicines in care homes*. SC1. NICE, 2015. Available at: [www.nice.org.uk/guidance/sc1](http://www.nice.org.uk/guidance/sc1)
5. NICE. *Nutrition support in adults*. Clinical Guideline 32. London: NICE, 2006. Available at [www.nice.org.uk/CG32](http://www.nice.org.uk/CG32)
6. Department of Health. National service framework for older people. London: DH, 2001. [www.gov.uk/government/uploads/system/uploads/attachment\\_data/file/198033/National\\_Service\\_Framework\\_for\\_Older\\_People.pdf](http://www.gov.uk/government/uploads/system/uploads/attachment_data/file/198033/National_Service_Framework_for_Older_People.pdf)
7. Griffith R. Managing medicine for residents with swallowing problems. *Nursing and Residential Care* 2006; **8**(5): 229–232.
8. Nursing and Midwifery Council. *Crushing Medication—A–Z Advice Sheet*. London: NMC; 2007.
9. Care Quality Commission. *Essential standards of quality and safety*. Newcastle: CQC; 2010. Available at: [www.cqc.org.uk/sites/default/files/media/documents/gac\\_-\\_dec\\_2011\\_update.pdf](http://www.cqc.org.uk/sites/default/files/media/documents/gac_-_dec_2011_update.pdf)
10. NICE. *Managing medicines in care homes*. Quality Standard 85. NICE, 2015. Available at: [www.nice.org.uk/guidance/qs85](http://www.nice.org.uk/guidance/qs85)
11. Wright D. Swallowing difficulties protocol: medication administration. *Nursing Standard* 2002; **17**: 43–45.
12. Wright D. Tablet crushing is a widespread practice but it is not safe and may not be legal. *The Pharmaceutical Journal* 2006; **269**: 132.
13. NICE. *Medicines optimisation: the safe and effective use of medicines to enable the best possible outcomes*. NG5. NICE, 2015. Available at: [www.nice.org.uk/guidance/ng5](http://www.nice.org.uk/guidance/ng5)
14. Church C and Smith J. How stable are medicines moved from original packs into compliance aids? *The Pharmaceutical Journal* 2006; **276**: 75–81.
15. British Association for Parenteral and Enteral Nutrition (BAPEN). Administering drugs via enteral feeding tubes: a practical guide. Available at: [www.bapen.org.uk/pdfs/d\\_and\\_e/de\\_pract\\_guide.pdf](http://www.bapen.org.uk/pdfs/d_and_e/de_pract_guide.pdf)
16. British Association for Parenteral and Enteral Nutrition (BAPEN). Drug administration via enteral feeding tubes: a guide for general practitioners and community pharmacists. Available at: [www.bapen.org.uk/pdfs/d\\_and\\_e/de\\_gp\\_guide.pdf](http://www.bapen.org.uk/pdfs/d_and_e/de_gp_guide.pdf)

# Are your patients finding effective medicines hard to swallow?



Swallowing difficulties can affect 70 to 90% of older people.<sup>1</sup> So, many of your patients over the age of 60 may be having trouble swallowing tablets and capsules.<sup>2</sup> It may not have crossed your mind to ask them, and they probably won't tell you! So what could be happening to the medication you prescribed?

Some may not be taking it at all, meaning repeat visits to you or even worse, potential hospitalisation.<sup>3</sup> In fact 30% of emergency admissions amongst older people are related to medication (including non-compliance and omission of drugs) and more than 50% of these are preventable.<sup>4</sup>

Others may try to comply by crushing tablets or opening capsules, unknowingly changing the pharmacokinetics. This might render the medicine inactive, or as in the case of sustained releases tablets, deliver the whole dose at once risking a potential increase in Adverse Drug Reactions.<sup>5,6</sup>

There is a simple solution. Guidelines recommend that you should ask your patients if they can swallow medicines. If they can't, you could consider prescribing an alternative formulation, like an oral liquid.<sup>7</sup>

For more information on this topic visit [www.rosemontpharma.com](http://www.rosemontpharma.com)

**Rosemont**<sup>®</sup>

The source of liquid solutions.

A **Perrigo**<sup>®</sup> Company

**References:** 1. Kelly J, Wright D & Wood J. Medicine administration errors in patients with dysphagia in secondary care: a multi-centre observational study. *Journal of Advanced Nursing* 2011; **67**(12): 2615-2627. 2. Strachan I & Greener M. Medication-related swallowing difficulties may be more common than we realise. *Pharmacy in Practice* 2005; **15**: 411-14. 3. Greener M. *JME* 2006; **9**: 27-44. 4. Chan M,

Nicklason F and Vial JH. Adverse drug events as a cause of hospital admission in the elderly. *Internal Medicine Journal* 2001; **31**: 199-205. 5. Wright D. Medication administration in nursing homes. *Nurs Stand* 2002; **16**(42): 33-38. 6. Bonner MC. The facts about administering medicines in altered forms. *NRC* 2002; **4**(12): 568-571. 7. Consensus guidelines for the treatment of dysphagia. <http://www.eguidelines.co.uk>

**Rosemont Pharmaceuticals Ltd.** Rosemont House, Yorkdale Industrial Park, Braithwaite Street, Leeds LS11 9XE **T** +44 (0)113 244 1400 **F** +44 (0)113 245 3567  
**E** [rosemont.infodesk@perrigouk.com](mailto:rosemont.infodesk@perrigouk.com) Sales/ Customer Service: **T** +44 (0) 113 244 1999 **F** +44 (0) 113 246 0738 **W** [www.rosemontpharma.com](http://www.rosemontpharma.com)

Adverse events should be reported. Reporting forms and information can be found at [www.mhra.gov.uk/yellowcard](http://www.mhra.gov.uk/yellowcard) Adverse events should also be reported to Rosemont Pharmaceuticals Ltd on 0113 244 1400.